



**CHALLENGE**

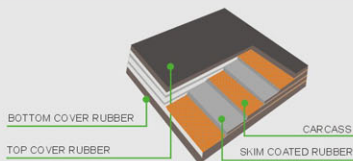


**HEAVY DUTY  
CONVEYOR BELT**



## General Multi-ply Rubber Belt

### CONSTRUCTION



The standard of Rubber Conveyor Belt consists of cover rubber, carcass, and rubber skim coat. And the reinforced fabric is used for extra protection.

#### COVER RUBBER

Cover of natural or synthetic rubber are designed to protect the carcass from abrasion, impact, deterioration, water and other injurious influence.

They are compounded to meet particular service conditions such as abrasion, oil, heat, fire, chemical resistant and antistatic, etc.

#### RUBBER SKIM COAT

An extra layer compounded between plies that increases flex life and creates a more elastic link, to which the fabric anchors firmly, so that plies flex without separation. Skim coats cushion fabrics against impact and help protect against moisture.

#### CARCASS

Carcass of a belt maintains belt tension and supplies structural strength; it does all of the work in supporting and pulling the load. Carcass consists of multiple plies of rubber impregnated fabric, bonded together with friction and skim coats.

The fabrics most commonly used are cotton, nylon and polyester, etc.



#### APPLICATION

Widely used in mining, power plant, construction, port, metallurgy, chemistry, food industries.

## EP (Polyester / Nylon) Conveyor Belt

### Character:

Less Stretch

Excellent Troughability

High Tensile Strength

High Impact Resistance

Suitable for medium, long distance and heavy load transportation of materials.

### Specification Availability

Carcass	Fabric structure		Type	Number of Plies	Thickness of cover		Belt Width(mm)
	Warp	Weft			Top	Down	
EP	Polyester	Nylon-66	EP80	2-8	3.0-6.0	1.5-4.5	300-2000
			EP100				
			EP125				
			EP150				
			EP200				
			EP250	3-6			
			EP3003-6				
			EP400				
EP5003-5	3-5						

## NN(Nylon/Nylon) Conveyor Belt

### Character

High Tensile Strength

High Impact Resistance

Less Bending Fatigue

Good Troughability

Light Weight Strong Adhesion And Less Ply Separation -High Resistance To Water

Suitable for medium, long distance and heavy-load transportation of materials.

### Specification Availability

Kinds of carcass	Fabric structure		Type	Number of Plies	Thickness of cover		Belt Width(mm)
	Warp	Weft			Top	Down	
NN	Nylon-66	Nylon-66	NN80	2-8	3.0-6.0	1.5-4.5	300-2000
			NN100				
			NN125				
			NN150				
			NN200				
			NN250	3-6			
			NN300				
			NN400				
NN500	3-5						

## High Temperature Resistant Conveyor Belt

### Application

Suitable for all common Heat Resistant Conveyor application, mainly used for relatively high temperature materials conveying, for temperature no more than 500 C°, like steel/metallurgical/cement/chemistry/glass industries, etc.

### Character

Good heating stability, to carry hot materials.

The carcass of this product has very high adhesion after the special treatment of coating and shaping.

Manufactured in special fabrication process with special structure materials.



## Oil Resistant Conveyor Belt

### Application

Oil resistant belt carry parts and components coated with machine oil; heavy-oil treated coal in cooking plants and electric power generating plants; soybean dross, fish, meat and other oily materials. Materials containing non-polar organic solvents and fuel.

### Character

The belt compounded of oil resistant synthetic rubber has good resistance to the damaging effects encountered when conveying oil contaminated or treated materials.

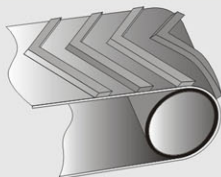
## Abrasion Resistant Conveyor Belt

To prolong the life of the belts running under severe wearing conditions, special and super abrasion rubber is compounded for the belt covers.

## Chemical Resistant Conveyor Belt

This belt performs effectively when chemicals, pulps, ceramics, foodstuffs, fertilizers, etc. are attached to the material to be carried.

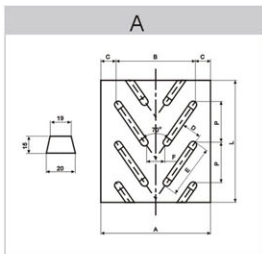
## Chevron Belt



### Application

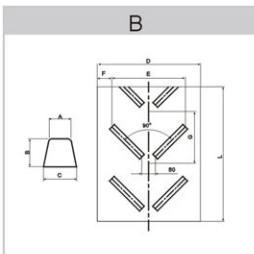
Suitable for conveying powdered, granulated and small lump materials inclined. Also for package handling.

### Specification Availability



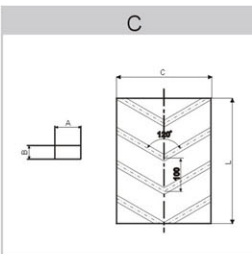
Dimension - mm

A	B	C	D	E	F	P
400	300	50	84	220	30	146
450	300	75	84	220	30	146
500	300	100	84	220	30	146
550	300	125	84	220	30	146
600	450	75	125	350	30	219
650	450	100	125	350	30	219
700	600	50	188	480	30	328
800	600	100	188	480	30	328



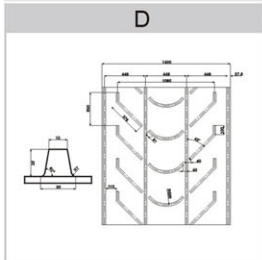
Dimension - mm

A	B	C	D	E	F	G
12	15	20	450	385	32	250
			500	385	58	250
			600	385	108	250
			650	385	133	250
			750	385	183	250
			600	450	75	300
12	15	20	650	450	100	300
			750	450	150	300
			800	450	175	300
			900	450	225	300
			900	750	75	250
			1000	750	125	250
12	15	20	1050	750	150	250
			1200	750	225	250



Dimension - mm

A	B	C
10	3	500
10	3	600
10	3	700
10	3	800
12	6	500
12	6	600
12	6	700
12	6	800
12	6	900
12	6	1000



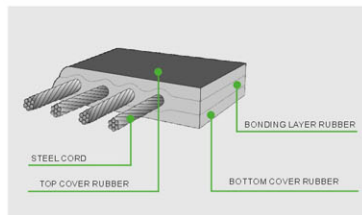
### OTHER PATTERNED BELT

We're willing to develop with you together with new patterned belting. Please contact us with further details.

## Steel Cord Rubber Belt

### CONSTRUCTION

Steel Cord Conveyor Belt consists of many steel cords at certain arrangement which becomes the main part of tensile holder of belt and covered with rubber.



### Application

Widely used in coal mining, port, power plant, metallurgy, construction industries.

Steel Cord Conveyor Belt suitable for the location with high intensity, long conveying distance, and low stretch requirement.

### Character

Heavy Duty

Long Working Life

Good Troughability And Flexibility

High Intensity

Low Stretch Rate

Good Anti-fatigue Ability

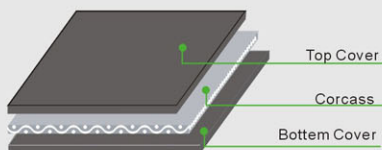
High Adaptability with drum wheel good groove forming

Specially applicable for long distance, big span, heavy load, high speed transportation.

### Specification Availability

Type	ST630	ST800	ST1000	ST1250	ST1600	ST2000	ST2500	ST3150	ST3500	ST4000	ST4500	ST5000
Technical Item												
Thickness Of Top Cover (mm)	5	5	6	6	6	8	8	8	8	8	10	10
Thickness Of Bottom Cover (mm)	5	5	6	6	6	6	6	8	8	8	10	10
Cord Diameter (mm)	3.0	3.5	4.0	4.5	5.0	6.0	7.5	8.1	8.6	9.1	9.7	10.9
Belt Width (mm)	Steel Cords Numbers											
800	75	75	63	63	63	63	50	50	50			
1000	95	95	79	79	79	79	64	64	64	64	59	55
1200	113	113	94	94	94	94	76	76	77	77	71	66
1400	133	133	111	111	111	111	89	89	90	90	84	78
1600	151	151	126	126	126	126	101	101	104	104	96	90
1800		171	143	143	143	143	114	114	117	117	109	102
2000			159	159	159	159	128	128	130	130	121	113
2200			176	176	176	176	141	141	144	144	134	125

## Mono-ply Belt



### Non pressed PVC type

#### Construction

After dipping with PVC on the solid woven fabric, add PVC cover on the solid carcass to form the belt.

#### Specification Availability

The belt is non-pressed with cover no more than 0.8mm

Grade of strength	BELT WIDTH (MM)
680	500-2200
800	
1000	
1250	
1400	
1600	
1800	
2000	
2500	

### PVG type

#### Construction

Based on PVC carcass, with rubber component top and bottom cover, formed after being pressed.

#### Specification Availability

The thickness of PVG cover can be selected from 1~8mm. For the belt strength below 1400N/mm, the cover thickness less 2+2 is recommended, over 1400N/mm, we recommend the cover thickness over 2+2

Grade of strength	BELT WIDTH (MM)
680	500-2200
800	
1000	
1250	
1400	
1600	
1800	
2000	
2500	

#### Application

Used in coal mining and other working conditions that need fire resistant and antistatic properties.

#### Character

Good fire resistant and antistatic properties

Light weight

High strength

Super anti-ripping and impact resistance

The solid woven fabric uses high tensile strength and low elongation polyester long filament as warp fibre, for weft fibre, it uses high tensile and medium modulus nylon filament. The fabric is high in strength, low in elongation, light in carcass, free of separation of plies, shock resistant, anti-tear and good in troughability.

## Skirt Board

Used in guiding product on the conveyor belt. Also used for lining chutes, hoppers and troughs. Available with different thickness from 3mm–25mm.

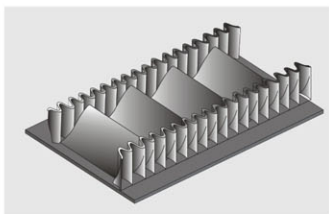


## Side Wall & Cleat

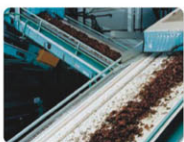
Used for making raised cleat conveyor belts, which is suitable for transportation of firewood, hay, glass, recycled materials, packaged goods and boxes at an inclined angle.

According to its operational requirement and size, the shape and pitch of the rubber side walls & cleat can adequately be made.

Name	Type	N				S				ES			
Sidewall													
Height		35	60	80	100	120	160	200	240	300	400	500	630
Structure													
Type		TC				TC				TC			
Height		35	55	75	90	110	140	180	220	280			
Structure													
Type		T				T		TS		TS			
Height		35	55	75	90	110	140	180	220	280	360	460	580
Structure													
Type		C				C		TCS		TCS			
Height		35	55	75	90	110		180	220	280	360	460	580





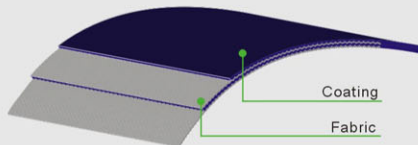


**LIGHT WEIGHT  
CONVEYOR BELT**



## General Light Weight Rubber Belt

### Construction



### Application

Suitable for food, electronic, tobacco, printing, package handling, textile, chemical, airport industries, etc., For light weight conveying.

### Specification Availability

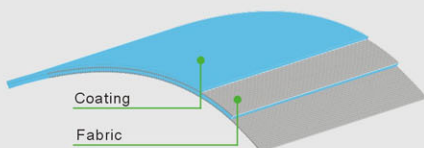
Type	Construction	Thickness	Belt Width(mm)
EP(Polyester/Nylon) Conveyor Belt	1ply/1coat	0.5-1.5	300-1500
	1ply/2 coat	1.0-1.5	
	2ply/2coat	1.5-2.0	
	2ply/3 coat	2.0-3.0	
	2ply/2coat	1.0-2.0	
	3ply/3coat	3.0-3.5	
	3ply/4coat	3.0-4.0	
	3ply/2coat	2.5-3.0	
	4ply/4coat	4.0-4.5	
	4ply/5coat	4.0-5.0	
4ply/3coat	3.5-4.0		
5ply/6coat	≥5.0		

## Super Grip (Rough Top) Rubber Belt



## PVC Belt

### Construction



### Application:

Suitable for food, electronic, tobacco, printing, package handling, textile, chemical, airport, fitness equipment industries, etc., for light weight conveying. Some are using at antistatic conditions.

I	II	III	IV	V	Additional Instruction
					Thickness
					Pattern
					Color
					No. of Plies

I. No. of Plies	II. Color	III. Pattern	IV. Standard Thickness	(V). Additional Instruction
1-1ply	1-Green	P-Plane	1-1mm	A-Thicker than Standard
2-2ply	2-White	S-Diamond	2-2mm	B-Thinner than Standard
3-3ply	3-Cobalt Blue	V-Matt	3-3mm	K-Antistatic
4-4ply	4-Black	C-Super Grip/Rough Top	4-4mm	
	5-Gray	Z- Longitudinal groove	5-5mm	
	8-Sky Blue	D- Orb Structure	6-6mm	
	0-Transparent	G- Quadrangular Pattern	7-7mm	
		W- Impregnated Fabric	8-8mm	
		JZ-Sawtooth	9-9mm	
		FC-Super Grip/Squre Tooth		
		MD-Cotton Fabric		
		MZ- Non Woven Buffered /Ground Finish		
		LD- rhomboid pattern		
		BC-Jink Wave Grip		
		VG-Golf Sturcture		
		RZ-Herringbone		
		YD- Round Dot		
		SG- Quadrel		
		PS- Smooth/Diamond		

### Remarks:

- Normally, the cover coating is the same color as inner ply coating. If any other color requested, please indicate.
- We're willing to develop any other specification which is not included in below item list. Please contact us for more details.

11P1	Thickness	Colour	Weight	Break Strength	Stretching Load	Working Temp.	Max. Width
	1mm	Green	1.2kg/m <sup>2</sup>	80N/mm	8N/mm	-10/+90°C	2000mm
	Cover Thickness	Finish	Min. Pulley Dia.	Roll Dia. 100M/Roll	No. of Plies	Usage Scope	
0.5mm	Smooth	∅ 10mm	∅ 370mm	1 Ply 1 Coating	For Conveying Light Weight Parts		

21P2	Thickness	Colour	Weight	Break Strength	Stretching Load	Working Temp.	Max. Width
	2mm	Green	2.35kg/m <sup>2</sup>	160N/mm	8N/mm	-10/+90°C	2000mm
	Cover Thickness	Finish	Min. Pulley Dia.	Roll Dia. 100M/Roll	No. of Plies	Usage Scope	
0.5mm	Smooth	∅ 25mm	∅ 600mm	2 Ply 2 Coating	For Conveying Light Weight Parts		

21P3	Thickness	Colour	Weight	Break Strength	Stretching Load	Working Temp.	Max. Width
	3mm	Green	3.4kg/m <sup>2</sup>	160N/mm	8N/mm	-10/+90°C	2000mm
	Cover Thickness	Finish	Min. Pulley Dia.	Roll Dia. 100M/Roll	No. of Plies	Usage Scope	
1mm	Smooth	∅ 50mm	∅ 700mm	2 Ply 2 Coating	For Conveying Light Weight Parts		

21P2K	Thickness	Colour	Weight	Break Strength	Stretching Load	Working Temp.	Max. Width
	2mm	Green	2.35kg/m <sup>2</sup>	160N/mm	8N/mm	-10/+90°C	2000mm
	Cover Thickness	Finish	Min. Pulley Dia.	Roll Dia. 100M/Roll	No. of Plies	Usage Scope	
0.5mm	Smooth	∅ 25mm	∅ 600mm	2 Ply 2 Coating	Antastic, For Digital /Electronic Industrial		

21P3K	Thickness	Colour	Weight	Break Strength	Stretching Load	Working Temp.	Max. Width
	3mm	Green	3.4kg/m <sup>2</sup>	160N/mm	8N/mm	-10/+90°C	2000mm
	Cover Thickness	Finish	Min. Pulley Dia.	Roll Dia. 100M/Roll	No. of Plies	Usage Scope	
1mm	Smooth	∅ 50mm	∅ 700mm	2 Ply 2 Coating	Antastic, For Digital /Electronic Industrial		

<b>22P2</b> 	<b>Thickness</b>	<b>Colour</b>	<b>Weight</b>	<b>Break Strength</b>	<b>Stretching Load</b>	<b>Working Temp.</b>	<b>Max. Width</b>
	2mm	White	2.4kg/m <sup>2</sup>	160N/mm	8N/mm	-10/+90°C	2000mm
	<b>Cover Thickness</b>	<b>Finish</b>	<b>Min. Pulley Dia.</b>	<b>Roll Dia. 100M/Roll</b>	<b>No. of Plies</b>	<b>Usage Scope</b>	
	0.5mm	Smooth	∅ 25mm	∅ 600mm	2 Ply 2 Coating	For Conveying Light Weight Parts	

<b>22P3</b> 	<b>Thickness</b>	<b>Colour</b>	<b>Weight</b>	<b>Break Strength</b>	<b>Stretching Load</b>	<b>Working Temp.</b>	<b>Max. Width</b>
	3mm	White	3.5kg/m <sup>2</sup>	160N/mm	8N/mm	-10/+90°C	2000mm
	<b>Cover Thickness</b>	<b>Finish</b>	<b>Min. Pulley Dia.</b>	<b>Roll Dia. 100M/Roll</b>	<b>No. of Plies</b>	<b>Usage Scope</b>	
	1mm	Smooth	∅ 50mm	∅ 700mm	2 Ply 2 Coating	Food Industrial	

<b>24P2</b> 	<b>Thickness</b>	<b>Colour</b>	<b>Weight</b>	<b>Break Strength</b>	<b>Stretching Load</b>	<b>Working Temp.</b>	<b>Max. Width</b>
	2mm	Black	2.4kg/m <sup>2</sup>	160N/mm	8N/mm	-10/+90°C	2000mm
	<b>Cover Thickness</b>	<b>Finish</b>	<b>Min. Pulley Dia.</b>	<b>Roll Dia. 100M/Roll</b>	<b>No. of Plies</b>	<b>Usage Scope</b>	
	0.5mm	Smooth	∅ 25mm	∅ 600mm	2 Ply 2 Coating	For Conveying Light Weight Parts	

<b>31P4</b> 	<b>Thickness</b>	<b>Colour</b>	<b>Weight</b>	<b>Break Strength</b>	<b>Stretching Load</b>	<b>Working Temp.</b>	<b>Max. Width</b>
	4mm	Green	4.7kg/m <sup>2</sup>	300N/mm	13N/mm	-10/+90°C	2000mm
	<b>Cover Thickness</b>	<b>Finish</b>	<b>Min. Pulley Dia.</b>	<b>Roll Dia. 100M/Roll</b>	<b>No. of Plies</b>	<b>Usage Scope</b>	
	1mm	Smooth	∅ 75mm	∅ 770mm	3 Ply 3 Coating	For Conveying Medium Weight Parts	

<b>32P4</b> 	<b>Thickness</b>	<b>Colour</b>	<b>Weight</b>	<b>Break Strength</b>	<b>Stretching Load</b>	<b>Working Temp.</b>	<b>Max. Width</b>
	4mm	White	4.8kg/m <sup>2</sup>	300N/mm	13N/mm	-10/+90°C	2000mm
	<b>Cover Thickness</b>	<b>Finish</b>	<b>Min. Pulley Dia.</b>	<b>Roll Dia. 100M/Roll</b>	<b>No. of Plies</b>	<b>Usage Scope</b>	
	1mm	Smooth	∅ 75mm	∅ 770mm	3 Ply 3 Coating	Food Industrial	

21S2.2 	Thickness	Colour	Weight	Break Strength	Stretching Load	Working Temp.	Max. Width
	2.2mm	Green	2.4kg/m <sup>2</sup>	160N/mm	8N/mm	-10/+90°C	2000mm
	Cover Thickness	Finish	Min. Pulley Dia.	Roll Dia. 100M/Roll	No. of Plies	Usage Scope	
0.7mm	Diamond	∅ 25mm	∅ 620mm	2 Ply 2 Coating	For Conveying Light Weight Parts		

22S2.2 	Thickness	Colour	Weight	Break Strength	Stretching Load	Working Temp.	Max. Width
	2.2mm	White	2.4kg/m <sup>2</sup>	160N/mm	8N/mm	-10/+90°C	2000mm
	Cover Thickness	Finish	Min. Pulley Dia.	Roll Dia. 100M/Roll	No. of Plies	Usage Scope	
0.7mm	Diamond	∅ 25mm	∅ 620mm	2 Ply 2 Coating	Food Industrial		

24S2 	Thickness	Colour	Weight	Break Strength	Stretching Load	Working Temp.	Max. Width
	2.2mm	Black	2.4kg/m <sup>2</sup>	160N/mm	8N/mm	-10/+90°C	2000mm
	Cover Thickness	Finish	Min. Pulley Dia.	Roll Dia. 100M/Roll	No. of Plies	Usage Scope	
0.7mm	Diamond	∅ 25mm	∅ 620mm	2 Ply 2 Coating	For Conveying Light Weight Parts		

23V2 	Thickness	Colour	Weight	Break Strength	Stretching Load	Working Temp.	Max. Width
	2mm	Cobalt Blue	2.35kg/m <sup>2</sup>	160N/mm	8N/mm	-10/+90°C	2000mm
	Cover Thickness	Finish	Min. Pulley Dia.	Roll Dia. 100M/Roll	No. of Plies	Usage Scope	
0.5mm	Matt	∅ 25mm	∅ 600mm	2 Ply 2 Coating	Package Handling		

24V2 	Thickness	Colour	Weight	Break Strength	Stretching Load	Working Temp.	Max. Width
	2mm	Black	2.35kg/m <sup>2</sup>	160N/mm	8N/mm	-10/+90°C	2000mm
	Cover Thickness	Finish	Min. Pulley Dia.	Roll Dia. 100M/Roll	No. of Plies	Usage Scope	
0.5mm	Matt	∅ 25mm	∅ 600mm	2 Ply 2 Coating	Package Handling		

<b>21C5.3</b> 	<b>Thickness</b>	<b>Colour</b>	<b>Weight</b>	<b>Break Strength</b>	<b>Stretching Load</b>	<b>Working Temp.</b>	<b>Max. Width</b>
	5.3mm	Green	5kg/m <sup>2</sup>	200N/mm	10N/mm	-10/+90°C	2000mm
	<b>Cover Thickness</b>	<b>Finish</b>	<b>Min. Pulley Dia.</b>	<b>Roll Dia. 100M/Roll</b>	<b>No. of Plies</b>	<b>Usage Scope</b>	
3.5mm	Super Grip /Rough Top	∅ 80mm	∅ 900mm	2 Ply 2 Coating	Super Grip, for Inclined Conveying		

<b>23C5.3</b> 	<b>Thickness</b>	<b>Colour</b>	<b>Weight</b>	<b>Break Strength</b>	<b>Stretching Load</b>	<b>Working Temp.</b>	<b>Max. Width</b>
	5.3mm	Cobalt Blue	5kg/m <sup>2</sup>	200N/mm	10N/mm	-10/+90°C	2000mm
	<b>Cover Thickness</b>	<b>Finish</b>	<b>Min. Pulley Dia.</b>	<b>Roll Dia. 100M/Roll</b>	<b>No. of Plies</b>	<b>Usage Scope</b>	
3.5mm	Super Grip /Rough Top	∅ 80mm	∅ 900mm	2 Ply 2 Coating	Super Grip, for Inclined Conveying		

<b>24C5.3</b> 	<b>Thickness</b>	<b>Colour</b>	<b>Weight</b>	<b>Break Strength</b>	<b>Stretching Load</b>	<b>Working Temp.</b>	<b>Max. Width</b>
	5.3mm	Black	5kg/m <sup>2</sup>	200N/mm	10N/mm	-10/+90°C	2000mm
	<b>Cover Thickness</b>	<b>Finish</b>	<b>Min. Pulley Dia.</b>	<b>Roll Dia. 100M/Roll</b>	<b>No. of Plies</b>	<b>Usage Scope</b>	
3.5mm	Super Grip /Rough Top	∅ 80mm	∅ 900mm	2 Ply 2 Coating	Super Grip, for Inclined Conveying		

<b>21Z3</b> 	<b>Thickness</b>	<b>Colour</b>	<b>Weight</b>	<b>Break Strength</b>	<b>Stretching Load</b>	<b>Working Temp.</b>	<b>Max. Width</b>
	3mm	Green	3.5kg/m <sup>2</sup>	200N/mm	10N/mm	-10/+90°C	2000mm
	<b>Cover Thickness</b>	<b>Finish</b>	<b>Min. Pulley Dia.</b>	<b>Roll Dia. 100M/Roll</b>	<b>No. of Plies</b>	<b>Usage Scope</b>	
1.1mm	Longitudinal Groove	∅ 80mm	∅ 700mm	2 Ply 2 Coating	Grip, Adsorption capability		

<b>43D9</b> 	<b>Thickness</b>	<b>Colour</b>	<b>Weight</b>	<b>Break Strength</b>	<b>Stretching Load</b>	<b>Working Temp.</b>	<b>Max. Width</b>
	9mm	Cobalt Blue	10kg/m <sup>2</sup>	800N/mm	35N/mm	-10/+90°C	2000mm
	<b>Cover Thickness</b>	<b>Finish</b>	<b>Min. Pulley Dia.</b>	<b>Roll Dia. 100M/Roll</b>	<b>No. of Plies</b>	<b>Usage Scope</b>	
1mm	Orb Structure	∅ 450mm	∅ 1500mm	4 Ply 4 Coating	Marble/China Industrial		

<b>23G2.2</b> 	<b>Thickness</b>	<b>Colour</b>	<b>Weight</b>	<b>Break Strength</b>	<b>Stretching Load</b>	<b>Working Temp.</b>	<b>Max. Width</b>
	2.2mm	Cobalt Blue	2.7kg/m <sup>2</sup>	160N/mm	8N/mm	-10/+90°C	2000mm
	<b>Cover Thickness</b>	<b>Finish</b>	<b>Min. Pulley Dia.</b>	<b>Roll Dia. 100M/Roll</b>	<b>No. of Plies</b>	<b>Usage Scope</b>	
	0.5mm	Quadrangular Pattern	∅ 350mm	∅ 620mm	2 Ply 2 Coating	For Inclined Conveying	

<b>23G2.7</b> 	<b>Thickness</b>	<b>Colour</b>	<b>Weight</b>	<b>Break Strength</b>	<b>Stretching Load</b>	<b>Working Temp.</b>	<b>Max. Width</b>
	2.7mm	Cobalt Blue	3kg/m <sup>2</sup>	160N/mm	8N/mm	-10/+90°C	2000mm
	<b>Cover Thickness</b>	<b>Finish</b>	<b>Min. Pulley Dia.</b>	<b>Roll Dia. 100M/Roll</b>	<b>No. of Plies</b>	<b>Usage Scope</b>	
	0.9mm	Quadrangular Pattern	∅ 50mm	∅ 680mm	2 Ply 2 Coating	For Inclined Conveying	

<b>22W1.8</b> 	<b>Thickness</b>	<b>Colour</b>	<b>Weight</b>	<b>Break Strength</b>	<b>Stretching Load</b>	<b>Working Temp.</b>	<b>Max. Width</b>
	1.8mm	White /Fabric	2.16kg/m <sup>2</sup>	160N/mm	8N/mm	-10/+90°C	2000mm
	<b>Cover Thickness</b>	<b>Finish</b>	<b>Min. Pulley Dia.</b>	<b>Roll Dia. 100M/Roll</b>	<b>No. of Plies</b>	<b>Usage Scope</b>	
	0mm	Impregnated Fabric	∅ 25mm	∅ 570mm	2 Ply 1 Coating	Surface Sticking Free, Suitable for Conveying Dough	

<b>23JZ9</b> 	<b>Thickness</b>	<b>Colour</b>	<b>Weight</b>	<b>Break Strength</b>	<b>Stretching Load</b>	<b>Working Temp.</b>	<b>Max. Width</b>
	9mm	Cobalt Blue	5.6kg/m <sup>2</sup>	160N/mm	8N/mm	-10/+90°C	2000mm
	<b>Cover Thickness</b>	<b>Finish</b>	<b>Min. Pulley Dia.</b>	<b>Roll Dia. 100M/Roll</b>	<b>No. of Plies</b>	<b>Usage Scope</b>	
	7.2mm	Sawtooth	∅ 350mm	∅ 1500mm	2 Ply 2 Coating	Super Grip, for Inclined Conveyor	

<b>21FC6</b> 	<b>Thickness</b>	<b>Colour</b>	<b>Weight</b>	<b>Break Strength</b>	<b>Stretching Load</b>	<b>Working Temp.</b>	<b>Max. Width</b>
	6mm	Green	6kg/m <sup>2</sup>	160N/mm	8N/mm	-10/+90°C	2000mm
	<b>Cover Thickness</b>	<b>Finish</b>	<b>Min. Pulley Dia.</b>	<b>Roll Dia. 100M/Roll</b>	<b>No. of Plies</b>	<b>Usage Scope</b>	
	7.2mm	Super Grip /Square Tooth	∅ 350mm	∅ 1500mm	2 Ply 2 Coating	Super Grip, for Inclined Conveying	



32MD3 	Thickness	Colour	Weight	Break Strength	Stretching Load	Working Temp.	Max. Width
	3mm	White /Fabric	3.6kg/m <sup>2</sup>	270N/mm	10N/mm	-10/+90°C	2000mm
	Cover Thickness	Finish	Min. Pulley Dia.	Roll Dia. 100M/Roll	No. of Plies	Usage Scope	
1.3mm	Super Grip /Rough Top	∅ 65mm	∅ 700mm	2 Ply 2 Coating	Surface Sticking Free, Suitable for Conveying Dough		

24MZ3 	Thickness	Colour	Weight	Break Strength	Stretching Load	Working Temp.	Max. Width
	3mm	Black	3kg/m <sup>2</sup>	180N/mm	13N/mm	-10/+90°C	1100mm
	Cover Thickness	Finish	Min. Pulley Dia.	Roll Dia. 100M/Roll	No. of Plies	Usage Scope	
3.5mm	Non Woven Buffed/ Ground Finish	∅ 65mm	∅ 720mm	2 Ply 2 Coating	Surface Sticking Free, Suitable for Conveying Dough		

24MZ4 	Thickness	Colour	Weight	Break Strength	Stretching Load	Working Temp.	Max. Width
	4mm	Black	4kg/m <sup>2</sup>	200N/mm	15N/mm	-10/+90°C	1100mm
	Cover Thickness	Finish	Min. Pulley Dia.	Roll Dia. 100M/Roll	No. of Plies	Usage Scope	
2.8mm	Non Woven Buffed/ Ground Finish	∅ 75mm	∅ 770mm	2 Ply 2 Coating	For Conveying Metal Parts		

43LD9 	Thickness	Colour	Weight	Break Strength	Stretching Load	Working Temp.	Max. Width
	9mm	Cobalt Blue	10kg/m <sup>2</sup>	2800N/mm	35N/mm	-10/+80°C	2000mm
	Cover Thickness	Finish	Min. Pulley Dia.	Roll Dia. 100M/Roll	No. of Plies	Usage Scope	
3mm	Rhomboid Pattern	∅ 450mm	∅ 1550mm	4 Ply 4 Coating	For Marble Process Industry		

21BC5.3 	Thickness	Colour	Weight	Break Strength	Stretching Load	Working Temp.	Max. Width
	5.3mm	Green	5kg/m <sup>2</sup>	200N/mm	10N/mm	-10/+90°C	2000mm
	Cover Thickness	Finish	Min. Pulley Dia.	Roll Dia. 100M/Roll	No. of Plies	Usage Scope	
3.5mm	Jink Wave Grip	∅ 80mm	∅ 900mm	2 Ply 2 Coating	Super Grip, for Inclined Conveyor		

23VG3 	Thickness	Colour	Weight	Break Strength	Stretching Load	Working Temp.	Max. Width
	3mm	Cobalt Blue	3.5kg/m <sup>2</sup>	160N/mm	8N/mm	-10/+90°C	2000mm
	Cover Thickness	Finish	Min. Pulley Dia.	Roll Dia. 100M/Roll	No. of Plies	Usage Scope	
1.1mm	Golf sturcture	∅ 50mm	∅ 700mm	2 Ply 2 Coating	For Conveying Light Weight Parts		

21RZ4 	Thickness	Colour	Weight	Break Strength	Stretching Load	Working Temp.	Max. Width
	4mm	Green	4.0kg/m <sup>2</sup>	160N/mm	8N/mm	-10/+90°C	2000mm
	Cover Thickness	Finish	Min. Pulley Dia.	Roll Dia. 100M/Roll	No. of Plies	Usage Scope	
2.8mm	Herringbone	∅ 80mm	∅ 770mm	2 Ply 2 Coating	For Inclined Conveying		

21YD5.5 	Thickness	Colour	Weight	Break Strength	Stretching Load	Working Temp.	Max. Width
	5.5mm	Green	4.3kg/m <sup>2</sup>	160N/mm	8N/mm	-10/+90°C	2000mm
	Cover Thickness	Finish	Min. Pulley Dia.	Roll Dia. 100M/Roll	No. of Plies	Usage Scope	
3.5mm	Round Dot	∅ 80mm	∅ 970mm	2 Ply 2 Coating	For Tabacco Industry		

34SG9 	Thickness	Colour	Weight	Break Strength	Stretching Load	Working Temp.	Max. Width
	9mm	Black	8.5kg/m <sup>2</sup>	300N/mm	18N/mm	-10/+90°C	2000mm
	Cover Thickness	Finish	Min. Pulley Dia.	Roll Dia. 100M/Roll	No. of Plies	Usage Scope	
3.5mm	Quadrel	∅ 120mm	∅ 1500mm	3 Ply 2 Coating	For Wood Process Industry		

21PS3 	Thickness	Colour	Weight	Break Strength	Stretching Load	Working Temp.	Max. Width
	3mm	Green	3.5kg/m <sup>2</sup>	160N/mm	8N/mm	-10/+90°C	2000mm
	Cover Thickness	Finish	Min. Pulley Dia.	Roll Dia. 100M/Roll	No. of Plies	Usage Scope	
1.1mm	Smooth /Diamond	∅ 50mm	∅ 700mm	2 Ply 3 Coating	For Conveying Light Weight Parts		

<b>22PS3</b> 	<b>Thickness</b>	<b>Colour</b>	<b>Weight</b>	<b>Break Strength</b>	<b>Stretching Load</b>	<b>Working Temp.</b>	<b>Max. Width</b>
	3mm	White	3.5kg/m <sup>2</sup>	160N/mm	8N/mm	-10/+90°C	2000mm
	<b>Cover Thickness</b>	<b>Finish</b>	<b>Min. Pulley Dia.</b>	<b>Roll Dia. 100M/Roll</b>	<b>No. of Plies</b>	<b>Usage Scope</b>	
1.1mm	Smooth /Diamond	∅ 50mm	∅ 700mm	2 Ply 3 Coating	For Conveying Light Weight Food		

## PU Belt

### Specification Availability / Application / Character

Product code	Thickness (mm)	Weight Kg/m <sup>2</sup>	Break Strength N/mm	1% Stretching load (N/mm)	Working Temperature °C	Max Width (mm)	
12PU0.8	0.8		100	8	-10~80	2000	
22PU1.6	1.6		200	10	-10~80	2000	
Thickness of coating (mm)	Mini.pully Dia.mm	Dia /100M (mm)	Material	Surface	Color	Number of Fabrics	Antistatic
0.3	20	380	PU	Smooth/Matt	White	1	No
0.35	25	500	PU	Smooth/Matt	White	2	No

<b>12PU0.8</b> 	<b>Thickness</b>	<b>Colour</b>	<b>Weight</b>	<b>Break Strength</b>	<b>Stretching Load</b>	<b>Working Temp.</b>	<b>Max. Width</b>
	0.8mm	White	0.95kg/m <sup>2</sup>	100N/mm	8N/mm	-10/+80°C	2000mm
	<b>Cover Thickness</b>	<b>Finish</b>	<b>Min. Pulley Dia.</b>	<b>Roll Dia. 100M/Roll</b>	<b>No. of Plies</b>	<b>Usage Scope</b>	
0.3mm	Smooth	∅ 20mm	∅ 380mm	1 Ply 1 Coating	For Conveying Light Weight Food		

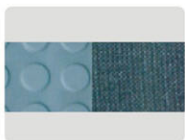
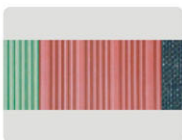
<b>22PU1.6</b> 	<b>Thickness</b>	<b>Colour</b>	<b>Weight</b>	<b>Break Strength</b>	<b>Stretching Load</b>	<b>Working Temp.</b>	<b>Max. Width</b>
	1.6mm	White	1.95kg/m <sup>2</sup>	200N/mm	10N/mm	-10/+80°C	2000mm
	<b>Cover Thickness</b>	<b>Finish</b>	<b>Min. Pulley Dia.</b>	<b>Roll Dia. 100M/Roll</b>	<b>No. of Plies</b>	<b>Usage Scope</b>	
0.35mm	Smooth	∅ 25mm	∅ 500mm	2 Ply 2 Coating	For Conveying Medium Weight Food		

#### Note:

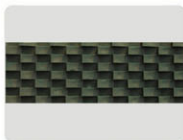
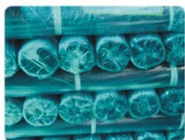
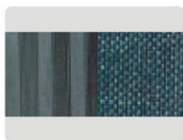
If above mentioned specifications are not what you need, we're willing to develop with you together with new patterned belting. Please contact us with further details

## Guide & Cleat

	Cross Section	Material	Type	Size (BottomxHeight) mm	Working Temp.	Min. Bending Dia. (Mm)		
						Top	Bottom	
Guide		PVC	D6	6X4	- 10 / +70	40	30	
			D8	8X5	- 10 / +70	50	40	
			D10	10X6	- 10 / +70	70	60	
			D13	13X8	- 10 / +70	100	80	
			D17	17X11	- 10 / +70	110	90	
		PU	D13	13X8	- 20 / +80	100	70	
			D17	17X11	- 20 / +80	110	90	
			D22	22X14	- 20 / +80	180	150	
Cleat		PVC	T10	10X10	- 10 / +70		40	
			T20	20X20	- 10 / +70		90	
			T30	25X30	- 10 / +70		120	
			T40	25X40	- 10 / +70		120	
			T50	25X50	- 10 / +70		120	
			T60	38X60	- 10 / +70		150	
			W35	28X35	- 10 / +70		130	
		PU	X50	30X50	- 10 / +70		80	
			X60	30X60	- 10 / +70		80	
			X80	43X80	- 10 / +70		100	
			T20	12X20	- 20 / +80		40	
			T30	12X30	- 20 / +80		45	
			Z120	40X120	- 20 / +80		300	



**RUBBER  
SHEET**



## General Rubber Sheet

### Specification

1-80mm X500-2000mm

### Performance

with middle pressure, work in the -15-60°C surroundings, water-proof, anti-shock and sealing

### Usage

according to the requirements of technical parameters, which can be applied to manufacture of kinds of sealing buffer washer, rubber mat, seals and the decoration and pavement of ground

### Color



Black



Milk white



grey



red



green



Blue

Etc.

## Fabric Insertion Rubber Sheet

### Specification

1.5-80mmX500-2000mm

### Performance

With middle pressure, strong tense and small distortion

### Usage

Punching seals and rings, which are applied to light conveying strap and work in the surroundings with high strength requirements

### Technical Parameter

Rubber materials can be produced in accordance with the needs of the clients.

Specific gravity	Tearing	Tension	Hardness
1.4-1.6	3.5Mpa	200%	70°±5°

### Color

Customized

All insertion rubber sheets can be smooth surface, or rough surface, or patterned

## Oil Resistant Rubber Sheet

### Specification

1-80mmX500-2000mm

### Performance

Work temperature-30-80°C, Work in the oil (engine oil, diesel, petrol and lubricant oil), with the feature of seal and anti-expansion.

### Usage

Apply to punch all kinds of anti-oil seals, airproof parts, rings and the pavement of grease touching work table, ground and electronic sites;

## Chemical Resistant

### Specification

1-80mmX500-2000mm

### Performance

with strong medium resistance and anti-corrosion performance in the acid & alkali surroundings

### Usage

Punch all kinds of anti acid & alkali corrosion seals, washer and the storage and protection of pipelines in the chemical enterprises, the pavement of table in the laboratory

## Patterned Rubber Sheet

### Specification

With middle pressure, water-proof and anti-slip features; pavement of table, ground and walkway in the hotel, gymnasium, meeting room, airport, shipping and vehicles;

### Usage

The application of this kind of product is very wide, they can be applied to the decoration and vehicles

### Feature

produced by drum type vulcanizing machine, no junction, shaped through one process procedure, fresh luster and no pollutions;

### Technical parameter

Specific gravity	Tearing	Tension	Hardness
1.5-1.7	3Mpa	250%	65°±5°

### Color



Black grey red Etc.

other colors are also available

## Product series



thin strip

<b>Thickness</b>	2.5-6mm
<b>Width</b>	1.6m
<b>Length</b>	According to the needs of the customers



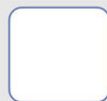
thin corrugated line

<b>Thickness</b>	3-20mm
<b>Width</b>	1.0m
<b>Length</b>	According to the needs of the customers



wide stripe

<b>Thickness</b>	4-20mm
<b>Width</b>	2.0m
<b>Length</b>	According to the needs of the customers



thin/wide stripe

<b>Thickness</b>	3-20mm
<b>Width</b>	2.0m
<b>Length</b>	According to the needs of the customers



round dot

<b>Thickness</b>	4-20mm
<b>Width</b>	1.2m
<b>Length</b>	According to the needs of the customers



light fabric finish

1-80mmX500-2000mm



rough surface fabric finish

1-80mmX500-2000mm



super rough fabric finish

1-80mmX500-2000mm